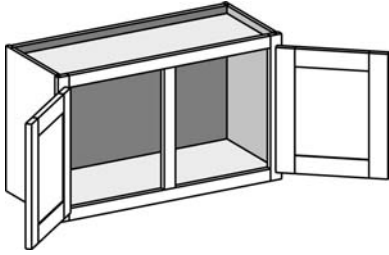


Wall Cabinet

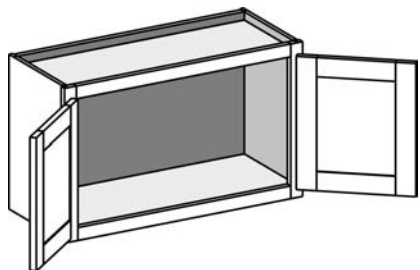


AVAILABLE OPTIONS (See Cabinet Options Section)

EXT	EXP	FL	MI	STR	FT	FTRA
✓	✓	✓	✓			

Cabinet Code	Cabinet Notes and Information
W3012	<ul style="list-style-type: none"> • All cabinets are listed width x height • All cabinets are 12-1/2" deep as standard unless specified otherwise. 15-1/2" deep cabinet or 15-1/2" deep cabinet side options are available.
W3312	
W3612	
W3912	
W4212	
W4812	
W2715	
W3015	
W3315	
W3615	
W3915	
W4215	
W4815	
W2718	
W3018	
W3318	
W3618	
W3918	
W4218	
W4818	

Wall Cabinet w/Butt Doors

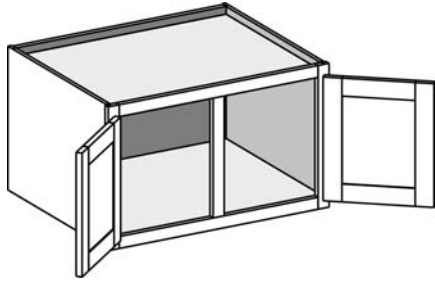


AVAILABLE OPTIONS (See Cabinet Options Section)

EXT	EXP	FL	MI	STR	FT	FTRA
✓	✓	✓	✓	✓		

Cabinet Code	Cabinet Notes and Information
W3012BD	<ul style="list-style-type: none"> • All cabinets listed width x height • All cabinets are 12-1/2" deep as standard. 15-1/2" deep cabinet or 15-1/2" deep cabinet side options are available
W3312BD	
W3612BD	
W2715BD	
W3015BD	
W3315BD	
W3615BD	
W2718BD	
W3018BD	
W3318BD	
W3618BD	

Wall Deep Cabinet



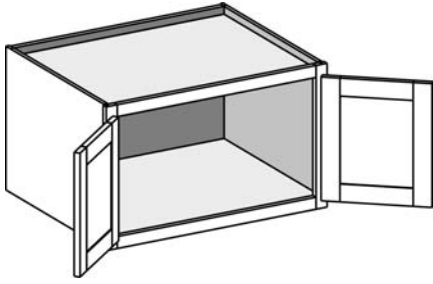
AVAILABLE OPTIONS (see Cabinet Options Section)

EXT	EXP	FL	MI	STR	FT	FTRA
✓	✓	✓	✓			

- 21" high and 24" high has one shelf and 27" high has 2 shelves

Cabinet Code	Cabinet Notes and Information
WD3012	<ul style="list-style-type: none"> • All cabinets listed width x height • All cabinets are 24" deep as standard. No other depth options are available. • 21" high and 24" high has one shelf and 27" high has 2 shelves • TIP: As an alternative to using a deep cabinet over your refrigerator, consider using the RTL, RTR or RTB cabinet option found in the TALL CABINETS Section. This cabinet provides a more built in look and integrates the side panels into the refrigerator cabinet for an easier install.
WD3312	
WD3612	
WD3912	
WD4212	
WD4512	
WD4812	
WD3015	
WD3315	
WD3615	
WD3915	
WD3018	
WD3318	
WD3618	
WD3918	
WD3021	
WD3321	
WD3621	
WD3921	
WD3024	
WD3324	
WD3624	
WD3924	
WD3027	
WD3327	
WD3627	
WD3927	

Wall Deep Cabinet w/Butt Doors

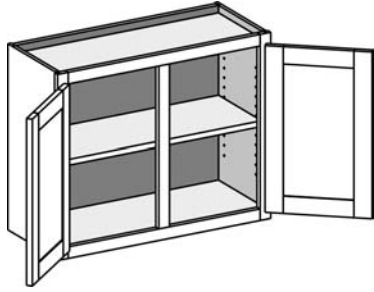


AVAILABLE OPTIONS (see Cabinet Options Section)

EXT	EXP	FL	MI	STR	FT	FTRA
✓	✓	✓	✓	✓		

Cabinet Code	Cabinet Notes and Information
WD3012BD	<ul style="list-style-type: none"> • All cabinets listed width x height • All cabinets are 24" deep as standard. No other depth options are available. • 21" high and 24" high has one shelf and 27" high has 2 shelves • TIP: As an alternative to using a deep cabinet over your refrigerator, consider using the RTL, RTR or RTB cabinet option found in the TALL CABINETS Section. This cabinet provides a more built in look and integrates the side panels into the refrigerator cabinet for an easier install.
WD3312BD	
WD3612BD	
WD3015BD	
WD3315BD	
WD3615BD	
WD3018BD	
WD3318BD	
WD3618BD	
WD3021BD	
WD3321BD	
WD3621BD	
WD3024BD	
WD3324BD	
WD3624BD	
WD3027BD	
WD3327BD	
WD3627BD	

Wall Cabinet

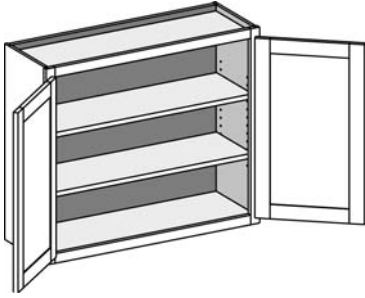


AVAILABLE OPTIONS (See Cabinet Options Section)

EXT	EXP	FL	MI	STR	FT	FTRA
✓	✓	✓	✓			

Cabinet Code	Cabinet Notes and Information
W2721	<ul style="list-style-type: none"> • All cabinets listed width x height • All cabinets are 12-1/2" deep as standard. 15-1/2" deep cabinet or 15-1/2" deep cabinet side options are available • 27" high has 2 shelves
W3021	
W3321	
W3621	
W3921	
W4221	
W4521	
W4821	
W2724	
W3024	
W3324	
W3624	
W3924	
W4224	
W4524	
W3027	
W3327	
W3627	

Wall Cabinet w/Butt Doors

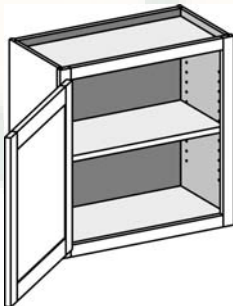


AVAILABLE OPTIONS (See Cabinet Options Section)

EXT	EXP	FL	MI	STR	FT	FTRA
✓	✓	✓	✓	✓		

Cabinet Code	Cabinet Notes and Information
W2721BD	<ul style="list-style-type: none"> All cabinets listed width x height All cabinets are 12-1/2" deep as standard. 15-1/2" deep cabinet or 15-1/2" deep cabinet side options are available 27" high has 2 shelves
W3021BD	
W3321BD	
W3621BD	
W2724BD	
W3024BD	
W3324BD	
W3624BD	
W3027BD	
W3327BD	
W3627BD	

Wall Cabinet

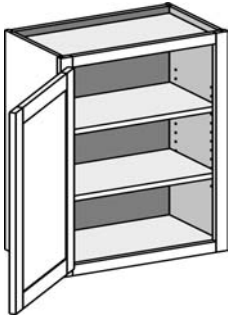


AVAILABLE OPTIONS (See Cabinet Options Section)

EXT	EXP	FL	MI	STR	FT	FTRA
✓	✓	✓	✓	✓		

Cabinet Code	Cabinet Notes and Information
W2421	<ul style="list-style-type: none"> All cabinets listed width x height All cabinets are 12-1/2" deep as standard. 15-1/2" deep cabinet or 15-1/2" deep cabinet side options are available
W2424	

Wall Cabinet



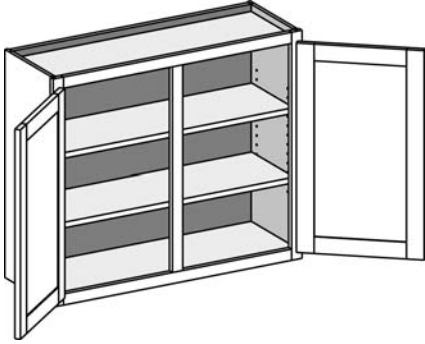
AVAILABLE OPTIONS (See Cabinet Options Section)

EXT	EXP	FL	MI	STR	FT	FTRA
✓	✓	✓	✓	✓		

- 42" high has 3 shelves
- STR not available on 9" and 12" wide cabinets

Cabinet Code	Cabinet Notes and Information
W0930	<ul style="list-style-type: none"> • All cabinets listed width x height • All cabinets are 12-1/2" deep as standard. 15-1/2" deep cabinet or 15-1/2" deep cabinet side options are available • 42" high has 3 shelves • STR not available on 9" and 12" wide cabinets
W1230	
W1530	
W1830	
W2130	
W2430	
W0936	
W1236	
W1536	
W1836	
W2136	
W2436	
W0942	
W1242	
W1542	
W1842	
W2142	
W2442	

Wall Cabinet

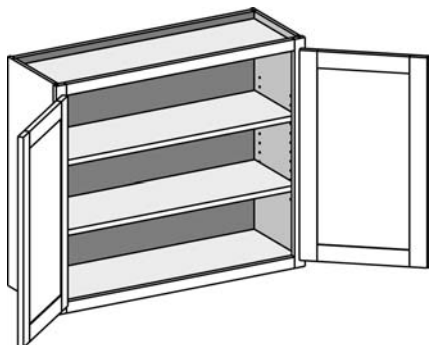


AVAILABLE OPTIONS (See Cabinet Options Section)

EXT	EXP	FL	MI	STR	FT	FTRA
✓	✓	✓	✓			

Cabinet Code	Cabinet Notes and Information
W2730	<ul style="list-style-type: none"> • All cabinets listed width x height • All cabinets are 12-1/2" deep as standard. 15-1/2" deep cabinet or 15-1/2" deep cabinet side options are available • 42" high has 3 shelves
W3030	
W3330	
W3630	
W3930	
W4230	
W4530	
W4830	
W2736	
W3036	
W3336	
W3636	
W3936	
W4236	
W4536	
W4836	
W2742	
W3042	
W3342	
W3642	
W3942	
W4242	
W4542	
W4842	

Wall Cabinet w/Butt Doors

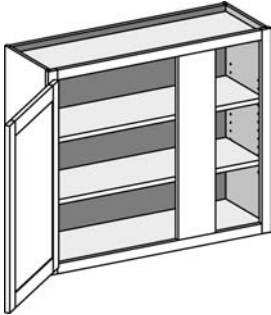


AVAILABLE OPTIONS (see Cabinet Options Section)

EXT	EXP	FL	MI	STR	FT	FTRA
✓	✓	✓	✓	✓		

Cabinet Code	Cabinet Notes and Information
W2430BD	<ul style="list-style-type: none"> • All cabinets listed width x height • All cabinets are 12-1/2" deep as standard. 15-1/2" deep cabinet or 15-1/2" deep cabinet side options are available • 42" high has 3 shelves
W2730BD	
W3030BD	
W3330BD	
W3630BD	
W2436BD	
W2736BD	
W3036BD	
W3336BD	
W3636BD	
W2442BD	
W2742BD	
W3042BD	
W3342BD	
W3642BD	

Wall Blind Corner Single Entry

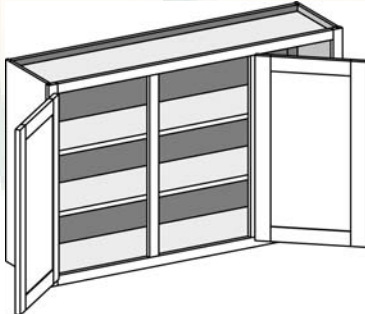


AVAILABLE OPTIONS (See Cabinet Options Section)

EXT	EXP	FL	MI	STR	FT	FTRA
	✓	✓	✓			

Cabinet Code	Cabinett Notes and Information
WBC2721	<ul style="list-style-type: none"> All cabinets listed width x height All cabinets are 12-1/2" deep as standard. 15-1/2" deep cabinet or 15-1/2" deep cabinet side options are available Units are reversible (left or right) 21" high has one shelf 42" high has 3 shelves TIP: Always be sure to allow space between your blind corner cabinet and the cabinet in the opposing run. This is necessary to provide clearance for doors to open. We suggest using the extended stil option on the cabinet going AGAINST the blind corner or simply use a space filler in the corner.
WBC3621	
WBC2730	
WBC3030	
WBC3630	
WBC2736	
WBC3036	
WBC3636	
WBC2742	
WBC3042	
WBC3642	

Wall Blind Corner Single Entry



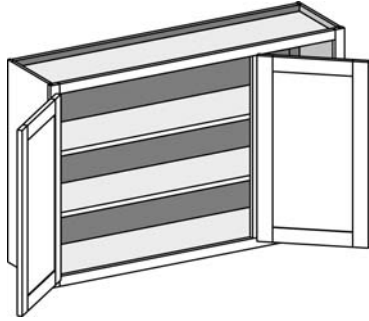
AVAILABLE OPTIONS (See Cabinet Options Section)

EXT	EXP	FL	MI	STR	FT	FTRA
	✓	✓	✓			

- 42" high has 3 shelves

Cabinet Code	Cabinet Notes and Information
WBC4230	<ul style="list-style-type: none"> All cabinets listed width x height All cabinets are 12-1/2" deep as standard. 15-1/2" deep cabinet or 15-1/2" deep cabinet side options are available 42" high has 3 shelves Units are reversible (left or right) TIP: Always be sure to allow space between your blind corner cabinet and the cabinet in the opposing run. This is necessary to provide clearance for doors to open. We suggest using the extended stil option on the cabinet going AGAINST the blind corner or simply use a space filler in the corner.
WBC4830	
WBC4236	
WBC4836	
WBC4242	
WBC4842	

Wall Blind Corner Single Entry w/Butt Doors

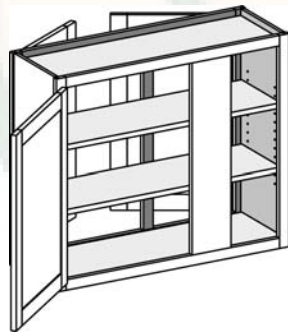


AVAILABLE OPTIONS (See Cabinet Options Section)

EXT	EXP	FL	MI	STR	FT	FTRA
	✓	✓	✓			

Cabinet Code	Cabinet Notes and Information
WBC4230BD	<ul style="list-style-type: none"> All cabinets listed width x height All cabinets are 12-1/2" deep as standard. 15-1/2" deep cabinet or 15-1/2" deep cabinet side options are available 42" high has 3 shelves Units are reversible (left or right) TIP: Always be sure to allow space between your blind corner cabinet and the cabinet in the opposing run. This is necessary to provide clearance for doors to open. We suggest using the extended stil option on the cabinet going AGAINST the blind corner or simply use a space filler in the corner.
WBC4830BD	
WBC4236BD	
WBC4836BD	
WBC4242BD	
WBC4842BD	

Wall Blind Corner Double Entry



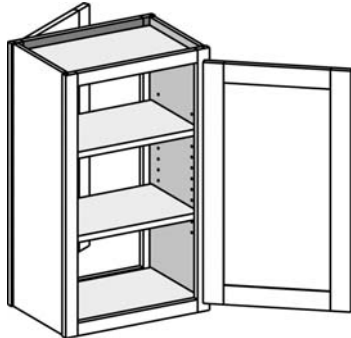
AVAILABLE OPTIONS (See Cabinet Options Section)

EXT	EXP	FL	MI	STR	FT	FTRA
✓	✓	✓	✓			

- Units are reversible (left or right)
- 21" high has one shelf
- 42" high has 3 shelves

Cabinet Code	Cabinet Notes and Information
WBD2721	<ul style="list-style-type: none"> All cabinets listed width x height All cabinets are 12-1/2" deep as standard. 21" high has one shelf 42" high has 3 shelves Units are reversible TIP: Always be sure to allow space between your blind corner cabinet and the cabinet in the opposing run. This is necessary to provide clearance for doors to open. We suggest using the extended stil option on the cabinet going AGAINST the blind corner or simply use a space filler in the corner.
WBD3621	
WBD2730	
WBD3630	
WBD2736	
WBD3636	
WBD2742	
WBD3642	

Wall Double Entry

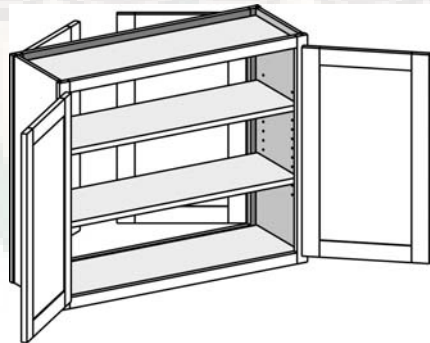


AVAILABLE OPTIONS (See Cabinet Options Section)

EXT	EXP	FL	MI	STR	FT	FTRA
✓	✓	✓	✓	✓		

Cabinet Code	Cabinet Notes and Information
WDE1821	<ul style="list-style-type: none"> • All cabinets listed width x height • All cabinets are 12-1/2" deep as standard. • 21" high has one shelf • 42" high has 3 shelves
WDE2421	
WDE1830	
WDE2430	
WDE1836	
WDE2436	
WDE1842	
WDE2442	

Wall Double Entry w/Butt Doors

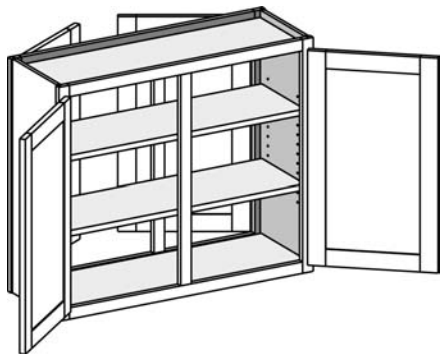


AVAILABLE OPTIONS (see Cabinet Options Section)

EXT	EXP	FL	MI	STR	FT	FTRA
✓	✓	✓	✓	✓		

Cabinet Code	Cabinet Notes and Information
WDE2421BD	<ul style="list-style-type: none"> • All cabinets listed width x height • All cabinets are 12-1/2" deep as standard • 21" high has one shelf • 42" high has 3 shelves
WDE2721BD	
WDE3621BD	
WDE2430BD	
WDE2730BD	
WDE3030BD	
WDE3630BD	
WDE2436BD	
WDE2736BD	
WDE3636BD	
WDE2442BD	
WDE2742BD	
WDE3642BD	

Wall Double Entry



AVAILABLE OPTIONS (see Cabinet Options Section)

EXT	EXP	FL	MI	STR	FT	FTRA
✓	✓	✓	✓			

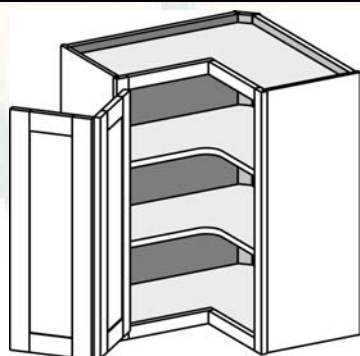
Cabinet Code

Cabinet Notes and Information

WDE2721
 WDE3621
 WDE2730
 WDE3030
 WDE3630
 WDE2736
 WDE3636
 WDE2742
 WDE3642

- All cabinets listed width x height
- All cabinets are 12-1/2" deep as standard.
- 21" high has one shelf
- 42" high has 3 shelves

Wall Corner Pie Cut



AVAILABLE OPTIONS (See Cabinet Options Section)

EXT	EXP	FL	MI	STR	FT	FTRA
✓	✓	✓	✓			

- Soss hinge for joining doors included
- 42" high has 3 shelves

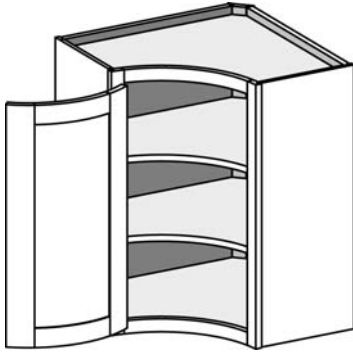
Cabinet Code

Cabinet Notes and Information

WCP2430
 WCP2730
 WCP2436
 WCP2736
 WCP2442
 WCP2742

- All cabinets listed width x height. Width is calculated out of the corner to either side of the cabinet.
- WCP24 cabinets are 12-1/2" deep, WCP27 units are 15-1/2" deep
- 42" high has 3 shelves
- Soss hinge for jointing doors is included
- **Consider this cabinet for ideal storage in corners that often end being underutilized in many kitchen designs!**

Wall Corner Concave

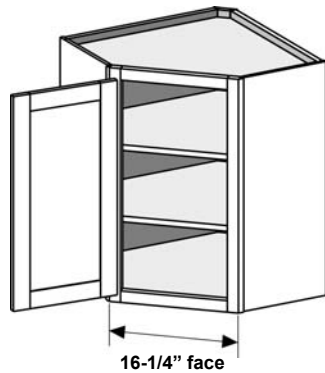


AVAILABLE OPTIONS (See Cabinet Options Section)

EXT	EXP	FL	MI	STR	FT	FTRA
	✓	✓	✓			

Cabinet Code	Cabinet Notes and Information
WCC2430	<ul style="list-style-type: none"> • All cabinets listed width x height. Width is calculated out of the corner to either side of the cabinet. • All cabinets are 12-1/2" deep as standard • Craftsman line only • 12-3/8" radius on face of front frame • 42" high has 3 shelves • Doors require extra lead time • Quotes require extra processing time • Not all door designs available
WCC2436	
WCC2442	

Wall Diagonal Corner Single Entry



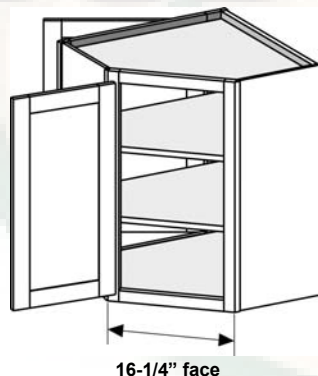
AVAILABLE OPTIONS (See Cabinet Options Section)

EXT	EXP	FL	MI	STR	FT	FTRA
✓	✓	✓	✓			

- 42" high has 3 shelves
- Uses 1/2" overlay hinges regardless of actual overlay ordered

Cabinet Code	Cabinet Notes and Information
WCS2430	<ul style="list-style-type: none"> • All cabinets listed width x height. Width is calculated out of the corner to either side of the cabinet. • WCS 24 cabinets are 12-1/2" deep. WCS27 cabinets are 15-1/2" deep • Optional polymer lazy susan or wood lazy susan trays available. • 42" high has 3 shelves • Uses 1/2" overlay hinges regardless of actual overlay ordered
WCS2730	
WCS2436	
WCS2736	
WCS2442	
WCS2742	

Wall Diagonal Corner Double Entry

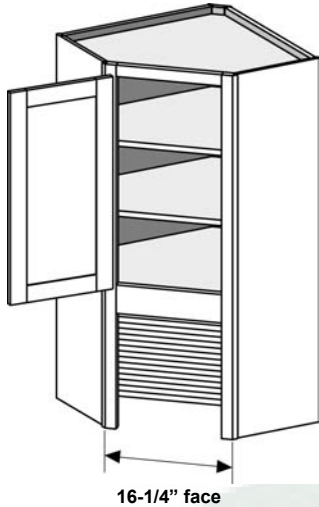


AVAILABLE OPTIONS (See Cabinet Options Section)

EXT	EXP	FL	MI	STR	FT	FTRA
	✓	✓	✓			

Cabinet Code	Cabinet Notes and Information
WCD2430	<ul style="list-style-type: none"> • All cabinets listed width x height. Width is calculated out of the corner to either side of the cabinet. • Cabinets are 12-1/2" deep as Standard. • Optional polymer lazy susan or wood lazy susan trays available. • 42" high has 3 shelves • Angled door uses 1/2" overlay hinges regardless of actual overlay ordered
WCD2436	
WCD2442	

Wall Corner Appliance Garage

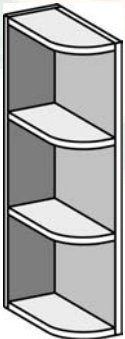


AVAILABLE OPTIONS (See Cabinet Options Section)

EXT	EXP	FL	MI	STR	FT	FTRA
	STD	✓	✓			

Cabinet Code	Cabinet Notes and Information
WCA2448	<ul style="list-style-type: none"> All cabinets listed width x height. Width is calculated out of the corner to either side of the cabinet. WCS 24 cabinets are 12-1/2" deep. WCS27 cabinets are 15-1/2" deep Optional polymer lazy susan (48" high only) or wood lazy susan trays available. Tambour door standard. Optional matching door for bottom opening available. 60" high has 3 shelves Uses 1/2" overlay hinges regardless of actual overlay ordered
WCA2748	
WCA2454	
WCA2754	
WCA2460	
WCA2760	

Wall Open Shelf

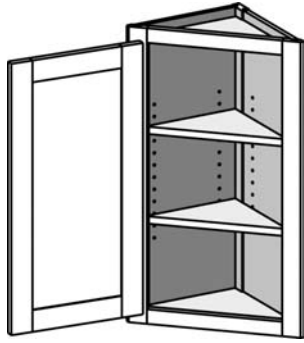


AVAILABLE OPTIONS (see Cabinet Options Section)

EXT	EXP	FL	MI	STR	FT	FTRA
			STD			

Cabinet Code	Cabinet Notes and Information
WOS0630	<ul style="list-style-type: none"> All cabinets listed width x height. Cabinets are 12-1/2" deep Craftsman line only Reversible left or right 3/4" matching specie plywood with dowel construction Exposed edges banded with matching specie veneer
WOS0636	
WOS0642	

Wall Angle End



AVAILABLE OPTIONS (See Cabinet Options Section)

EXT	EXP	FL	MI	STR	FT	FTRA
			✓			

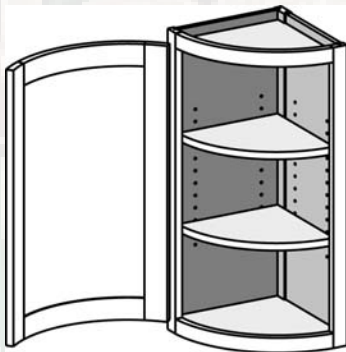
Cabinet Code

Cabinet Notes and Information

WAE1230
WAE1236
WAE1242

- All cabinets listed width x height.
- Cabinets are 12-1/2" deep
- Reversible left or right
- 42" high has 3 shelves

Wall Corner Convex



AVAILABLE OPTIONS (See Cabinet Options Section)

EXT	EXP	FL	MI	STR	FT	FTRA
			✓			

- Craftsman Line only
- Radius 11-5/8" on face of front
- 42" high has 3 shelves
- Door requires extra lead time

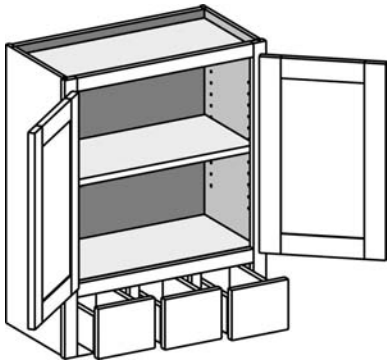
Cabinet Code

Cabinet Notes and Information

WCX1230
WCX1236
WCX1242

- Craftsman Line only
- All cabinets listed width x height.
- Cabinets are 12-1/2" deep
- Reversible left or right
- 42" high has 3 shelves
- Door requires extra lead time
- Quotes require extra processing time

Wall Spce Drawer w/Butt Doors



AVAILABLE OPTIONS (See Cabinet Options Section)

EXT	EXP	FL	MI	STR	FT	FTRA
✓	✓	✓	✓	✓		

Cabinet Code

Cabinet Notes and Information

WSD2430BD

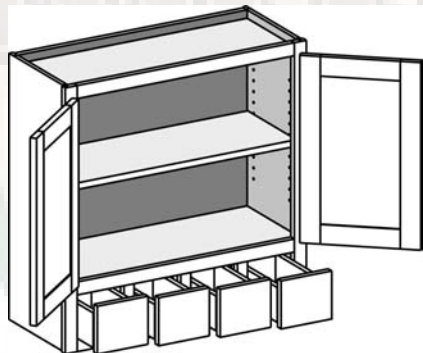
WSD2436BD

WSD2442BD

- All cabinets listed width x height.
- Cabinets are 12-1/2" deep
- 42" high has 3 shelves
- No drawer slides .

•

Wall Spice Drawer w/Butt Doors



AVAILABLE OPTIONS (See Cabinet Options Section)

EXT	EXP	FL	MI	STR	FT	FTRA
✓	✓	✓	✓	✓		

Cabinet Code

Cabinet Notes and Information

WSD3030BD

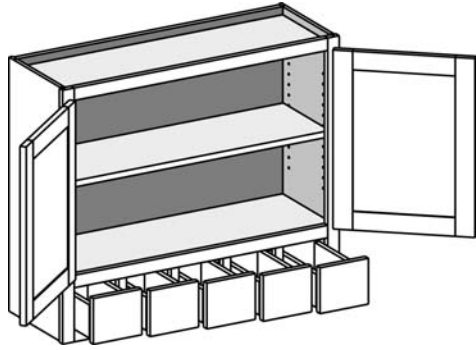
WSD3036BD

WSD3042BD

- All cabinets listed width x height.
- Cabinets are 12-1/2" deep
- 42" high has 3 shelves
- No drawer slides

•

Wall Spice Drawer w/Butt Doors

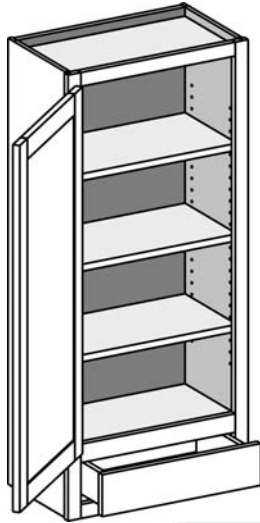


AVAILABLE OPTIONS (See Cabinet Options Section)

EXT	EXP	FL	MI	STR	FT	FTRA
✓	✓	✓	✓	✓		

Cabinet Code	Cabinet Notes and Information
WSD3630BD	<ul style="list-style-type: none"> • All cabinets listed width x height. • Cabinets are 12-1/2" deep • 42" high has 3 shelves • No drawer slides •
WSD3636BD	
WSD3642BD	

Wall 1 Drawer



AVAILABLE OPTIONS (See Cabinet Options Section)

EXT	EXP	FL	MI	STR	FT	FTRA
✓	STD	✓	✓	✓		

Cabinet Code

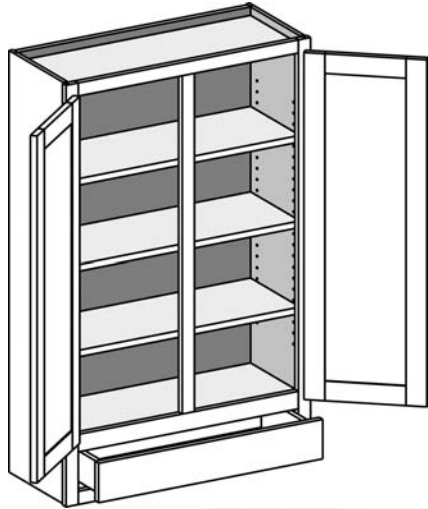
Cabinet Notes and Information

W1D1548
 W1D1848
 W1D2148
 W1D2448
 W1D1554
 W1D1854
 W1D2154
 W1D2454
 W1D1560
 W1D1860
 W1D2160
 W1D2460

- All cabinets listed width x height.
- Cabinets are 12-1/2" deep
- 60" high has four shelves
- Drawer front may be slab depending on drawer front design ordered (under minimum)

•

Wall 1 Drawer

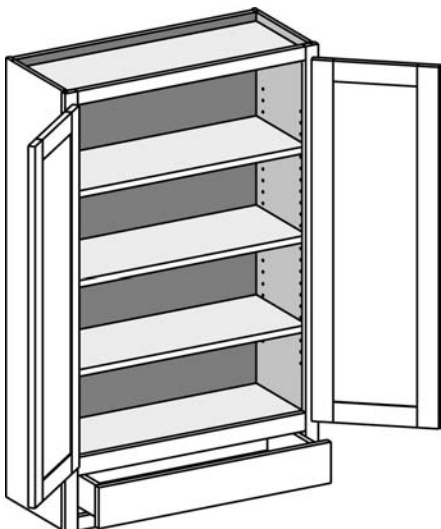


AVAILABLE OPTIONS (See Cabinet Options Section)

EXT	EXP	FL	MI	STR	FT	FTRA
✓	STD	✓	✓			

Cabinet Code	Cabinet Notes and Information
W1D2748	<ul style="list-style-type: none"> • All cabinets listed width x height. • Cabinets are 12-1/2" deep • 60" high has four shelves • Drawer front may be slab depending on drawer front design ordered (under minimum) •
W1D3048	
W1D3348	
W1D3648	
W1D2754	
W1D3054	
W1D3354	
W1D3654	
W1D2760	
W1D3060	
W1D3360	
W1D3660	

Wall 1 Drawer w/Butt Doors



AVAILABLE OPTIONS (See Cabinet Options Section)

EXT	EXP	FL	MI	STR	FT	FTRA
✓	STD	✓	✓	✓		

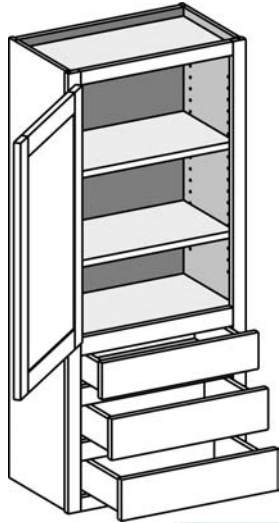
Cabinet Code

Cabinet Notes and Information

W1D2448BD
 W1D2748BD
 W1D3048BD
 W1D3348BD
 W1D3648BD
 W1D2454BD
 W1D2754BD
 W1D3054BD
 W1D3354BD
 W1D3654BD
 W1D2460BD
 W1D2760BD
 W1D3060BD
 W1D3360BD
 W1D3660BD

- All cabinets listed width x height.
- Cabinets are 12-1/2" deep
- 60" high has four shelves
- Drawer front may be slab depending on drawer front design ordered (under minimum)
-

Wall 3 Drawer

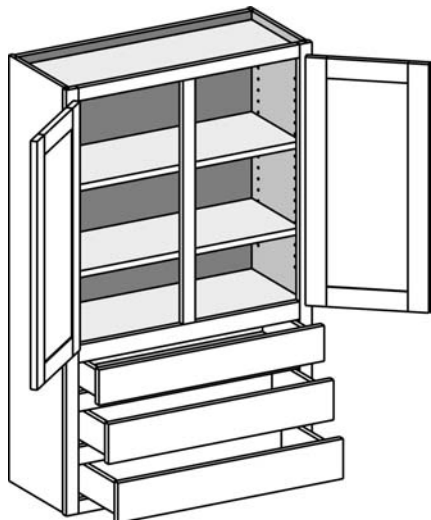


AVAILABLE OPTIONS (See Cabinet Options Section)

EXT	EXP	FL	MI	STR	FT	FTRA
✓	STD	✓	✓	✓		

Cabinet Code	Cabinet Notes and Information
W3D1548	<ul style="list-style-type: none"> • All cabinets listed width x height. • Cabinets are 12-1/2" deep • 60" high has four shelves • Drawer front may be slab depending on drawer front design ordered (under minimum) •
W3D1848	
W3D2148	
W3D2448	
W3D1554	
W3D1854	
W3D2154	
W3D2454	
W3D1560	
W3D1860	
W3D2160	
W3D2460	

Wall 3 Drawer



AVAILABLE OPTIONS (See Cabinet Options Section)

EXT	EXP	FL	MI	STR	FT	FTRA
✓	STD	✓	✓			

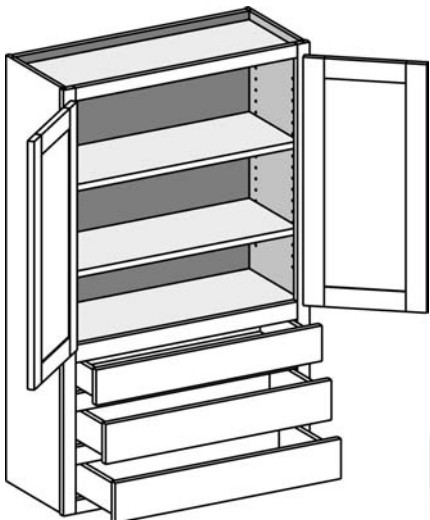
Cabinet Code

Cabinet Notes and Information

W3D2748
 W3D3048
 W3D3348
 W3D3648
 W3D2754
 W3D3054
 W3D3354
 W3D3654
 W3D2760
 W3D3060
 W3D3360
 W3D3660

- All cabinets listed width x height.
- Cabinets are 12-1/2" deep
- 60" high has four shelves
- Drawer front may be slab depending on drawer front design ordered (under minimum)
-

Wall 1 Drawer w/Butt Doors

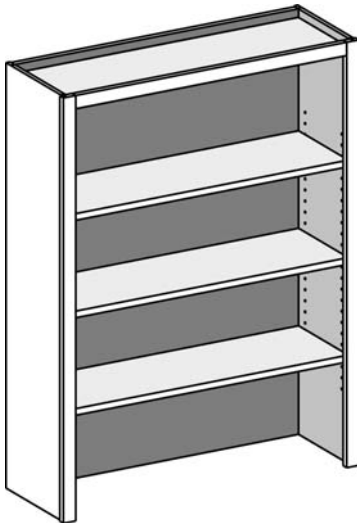


AVAILABLE OPTIONS (See Cabinet Options Section)

EXT	EXP	FL	MI	STR	FT	FTRA
✓	STD	✓	✓	✓		

Cabinet Code	Cabinet Notes and Information
W3D2448BD	<ul style="list-style-type: none"> • All cabinets listed width x height. • Cabinets are 12-1/2" deep • 60" high has four shelves • Drawer front may be slab depending on drawer front design ordered (under minimum) •
W3D2748BD	
W3D3048BD	
W3D3348BD	
W3D3648BD	
W3D2454BD	
W3D2754BD	
W3D3054BD	
W3D3354BD	
W3D3654BD	
W3D2460BD	
W3D2760BD	
W3D3060BD	
W3D3360BD	
W3D3660BD	

Wall Open Bookshelf

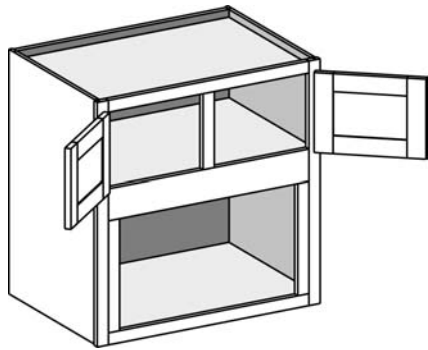


AVAILABLE OPTIONS (See Cabinet Options Section)

EXT	EXP	FL	MI	STR	FT	FTRA
✓	STD	✓	STD	✓		

Cabinet Code	Cabinet Notes and Information
WOBS1548	<ul style="list-style-type: none"> All cabinets listed width x height. Cabinets are 12-1/2" deep Available in the all plywood Craftsman line only 60" high has four shelves
WOBS1848	
WOBS2148	
WOBS2448	
WOBS2748	
WOBS3048	
WOBS3348	
WOBS3648	
WOBS1554	
WOBS1854	
WOBS2154	
WOBS2454	
WOBS2754	
WOBS3054	
WOBS3354	
WOBS3654	
WOBS1560	
WOBS1860	
WOBS2160	
WOBS2460	
WOBS2760	
WOBS3060	
WOBS3360	
WOBS3660	

Wall Microwave Built-in

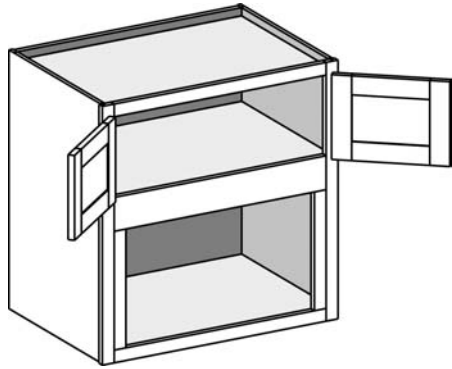


AVAILABLE OPTIONS (See Cabinet Options Section)

EXT	EXP	FL	MI	STR	FT	FTRA
✓	✓	✓	✓			

Cabinet Code	Cabinet Notes and Information
WMB2730	<ul style="list-style-type: none"> • All cabinets listed width x height. • Cabinets available 18" (standard) or 21" deep. Must specify. • 42" high has 1 shelf • 48" high has 2 shelves • Bottom opening height = 14" on 30" high cabinet. 15-1/2" on all others. Opening trimmable 2-1/2". • Bottom opening width is 6" less than cabinet width. Trimmable 3"
WMB3030	
WMB2736	
WMB3036	
WMB2742	
WMB3042	
WMB2748	
WMB3048	

Wall Microwave Built-in w/Butt Doors

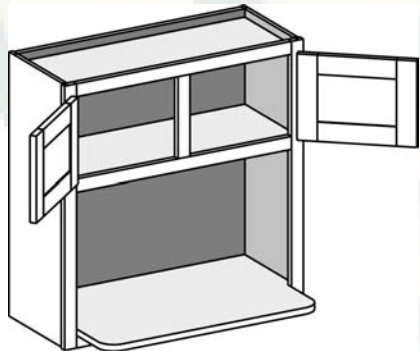


AVAILABLE OPTIONS (See Cabinet Options Section)

EXT	EXP	FL	MI	STR	FT	FTRA
✓	✓	✓	✓	✓		

Cabinet Code	Cabinet Notes and Information
WMB2730BD	<ul style="list-style-type: none"> • All cabinets listed width x height. • Cabinets available 18" (standard) or 21" deep. Must specify. • 42" high has 1 shelf • 48" high has 2 shelves • Bottom opening height = 14" on 30" high cabinet. 15-1/2" on all others. Opening trimmable 2-1/2". • Bottom opening width is 6" less than cabinet width. Trimmable 3"
WMB3030BD	
WMB2736BD	
WMB3036BD	
WMB2742BD	
WMB3042BD	
WMB2748BD	
WMB3048BD	

Wall Microwave Shelf

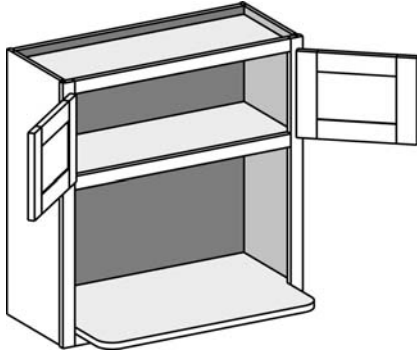


AVAILABLE OPTIONS (See Cabinet Options Section)

EXT	EXP	FL	MI	STR	FT	FTRA
✓	✓	✓	✓			

Cabinet Code	Cabinet Notes and Information
WMWS2730	<ul style="list-style-type: none"> • All cabinets listed width x height. • Cabinets are 12-1/2" deep • 42" high has 1 shelf • 48" high has 2 shelves • 18" deep matching specie plywood microwave shelf • Bottom opening height = 15-3/4"
WMWS3030	
WMWS2736	
WMWS3036	
WMWS2742	
WMWS3042	
WMWS2748	
WMWS3048	

Wall Microwave Shelf w/Butt Doors



AVAILABLE OPTIONS (See Cabinet Options Section)

EXT	EXP	FL	MI	STR	FT	FTRA
✓	✓	✓	✓	✓		

- 42" high has 1 shelf
- 48" high has 2 shelves
- 18" deep matching specie plywood microwave shelf
- Bottom opening height = 15-3/4"

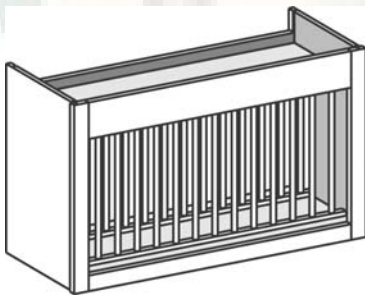
Cabinet Code

Cabinet Notes and Information

WMWS2430BD
WMWS2730BD
WMWS3030BD
WMWS2436BD
WMWS2730BD
WMWS3036BD
WMWS2430BD
WMWS2742BD
WMWS3042BD
WMWS2430BD
WMWS2748BD
WMWS3048BD

- All cabinets listed width x height.
- Cabinets are 12-1/2" deep
- 42" high has 1 shelf
- 48" high has 2 shelves
- 18" deep matching specie plywood microwave shelf
- Bottom opening height = 15-3/4"

Wall Plate Display



AVAILABLE OPTIONS (See Cabinet Options Section)

EXT	EXP	FL	MI	STR	FT	FTRA
✓	✓	✓	STD			

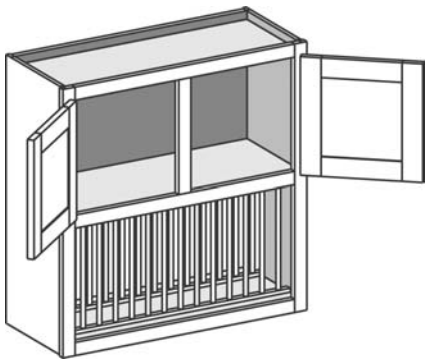
Cabinet Code

Cabinet Notes and Information

WPD3018
WPD3618

- All cabinets listed width x height.
- Cabinets are 12-1/2" deep
- All Plywood Craftsman line only
- Dowels are 3/8" diameter, spaced 2" on center
- Cut to size plate rack included

Wall Plate Display

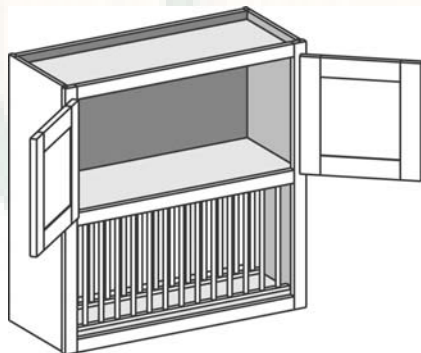


AVAILABLE OPTIONS (See Cabinet Options Section)

EXT	EXP	FL	MI	STR	FT	FTRA
✓	✓	✓	STD			

Cabinet Code	Cabinet Notes and Information
WPD3030	<ul style="list-style-type: none"> • All cabinets listed width x height. • Cabinets are 12-1/2" deep • 36" high has one shelf • 42" high has 2 shelves • All Plywood Craftsman line only • Dowels are 3/8" diameter, spaced 2" on center • Cut to size plate rack included
WPD3630	
WPD3036	
WPD3636	
WPD3042	
WPD3642	

Wall Plate Display w/Butt Doors



AVAILABLE OPTIONS (See Cabinet Options Section)

EXT	EXP	FL	MI	STR	FT	FTRA
✓	✓	✓	STD			

Cabinet Code	Cabinet Notes and Information
WPD3030BD	<ul style="list-style-type: none"> • All cabinets listed width x height. • Cabinets are 12-1/2" deep • 36" high has one shelf • 42" high has 2 shelves • All Plywood Craftsman line only • Dowels are 3/8" diameter, spaced 2" on center • Cut to size plate rack included
WPD3630BD	
WPD3036BD	
WPD3636BD	
WPD3042BD	
WPD3642BD	